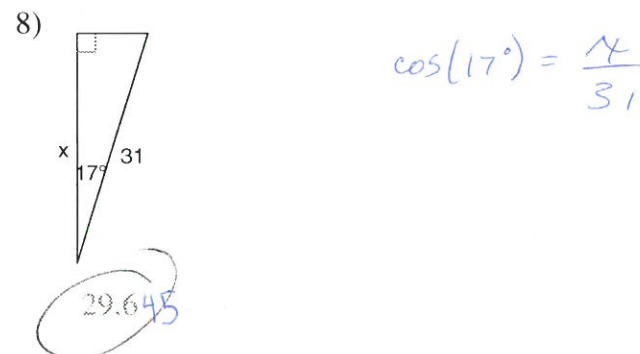
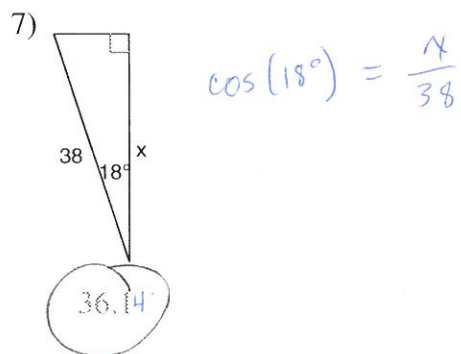
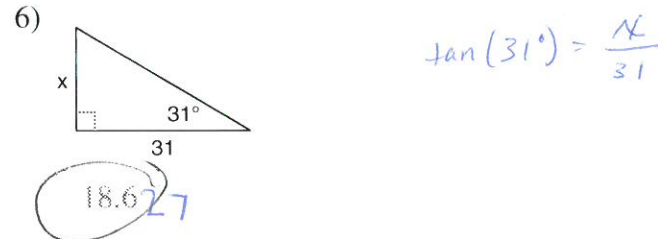
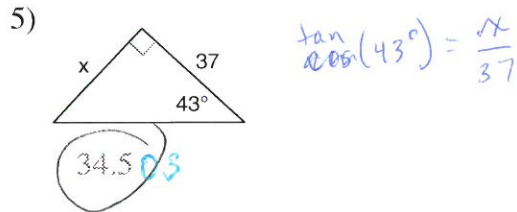
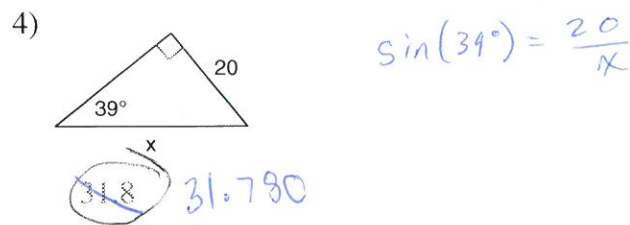
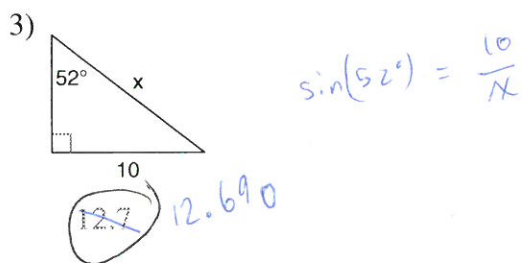
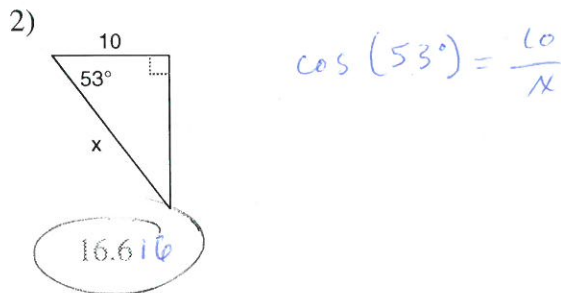
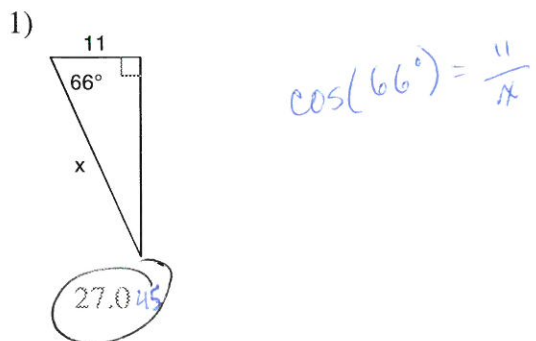


Geometry

SINUS

Find the missing side. Round to the nearest thousandth.



Find each angle measure to the nearest thousandth of a degree.

9)  $\cos W = 0.3256$

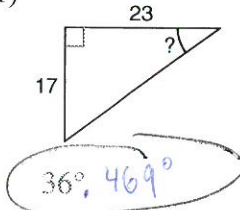
$71.000^\circ$   
 $70.998$

10)  $\tan W = 0.7002$

$35^\circ$   
 $34.919 \approx 35^\circ$

Find the measure of the indicated angle to the nearest thousandth of a degree.

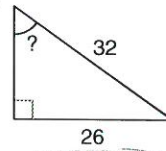
11)



$\tan(\theta) = \frac{17}{23}$

$36.469^\circ$

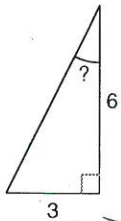
12)



$\sin(\theta) = \frac{26}{32}$

$54.341^\circ$

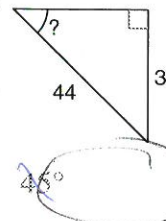
13)



$\tan(\theta) = \frac{1}{2}$

$26.565^\circ$

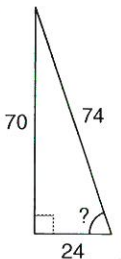
14)



$\sin(\theta) = \frac{31}{44}$

$44.743^\circ$

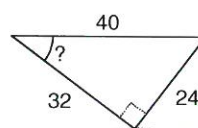
15)



$\tan(\theta) = \frac{70}{24}$

$71.075^\circ$

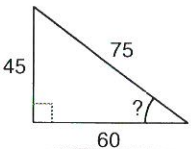
16)



$\tan(\theta) = \frac{24}{32}$

$36.870^\circ$

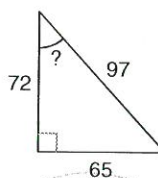
17)



$\tan(\theta) = \frac{45}{60}$

$36.870^\circ$

18)



$\tan(\theta) = \frac{65}{72}$

$42.075^\circ$